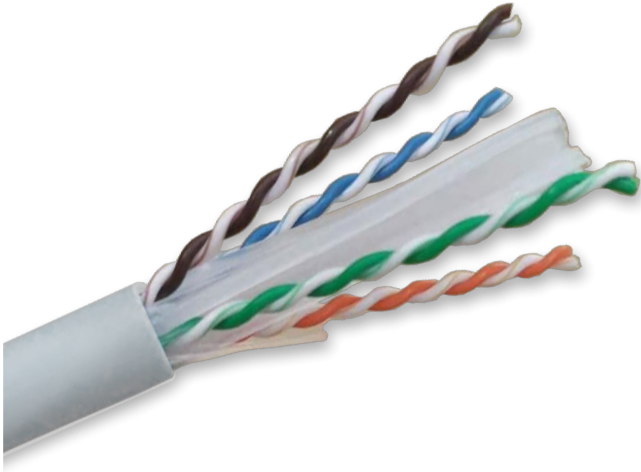


DATASHEET

Category 6A U-UTP Copper Cable



FEATURES & BENEFITS

- Category 6A Component compliant
- Enhance NEXT performance
- True 10 Gigabit performance
- LSZH Option available

ELECTRICAL PROPERTIES

	DESCRIPTION
MAX. ELECTRICAL RESISTANCE OF CONDUCTORS	95 Ω / Km
MUTUAL CAPACITANCE (NOM.)	50 pF / m
CHARACTERISTIC IMPEDANCE FROM 1 TO 500 MHz	100 Ω
DELAY SKEW	\leq 45 ns/100 m from 4 to 500 MHz
NVP	$>$ 64%

CONSTRUCTION

	DESCRIPTION
CONDUCTOR	23AWG annealed bare copper
INSULATION	Polyethylene
COLOUR CODE	White / Blue -Blue, White / Orange -Orange, White / Green -Green, White / Brown -Brown
OUTER JACKET	LSZH or PVC compound upon customer request
OVERALL DIAMETER	Nominal Diameter 8.0+/- 0.5 mm
ADDITIONAL COMPONENTS	Cable is supplied without ripcord unless specified by the customer Central separator for improved performance
PRINTING	Jacket printed Black with Legend as per customer requirement

PRODUCT INFORMATION

MSS Data Solutions offers this product as one of the best performing cables on the market today. Provides a quality and reliability whilst delivering 10 Gigabit performance now and many years into the future.

STANDARD COMPLIANCE

AS/NZS 11801.1:2019

ANSI/TIA 568.2-D

UL Subject 444

ACMA

IEC 61156-5 Cat6a

Category 6A U-UTP Copper Cable

MECHANICAL CHARACTERISTICS

	DESCRIPTION
MAXIMUM PULLING FORCE	100N
MINIMUM BENDING RADIUS	Once installed 4 x OD, during installation 8 x OD
WEIGHT	55 KG/KM
OPERATING TEMPERATURE	-15 Deg C ~ +60 Deg C
INSTALLATION TEMPERATURE	0 Deg C ~ +50 Deg C
FIRE PERFORMANCE PVC	VPVC: VW1, CMX, CM, CMG, CMR, IEC60332.1 LSZH: IEC60332.1, IEC60332.3

ELECTRICAL PERFORMANCE

TRANSMISSION FREQUENCY (MHz)	1	4	10	16	20	31.25	62.5	100	200	250	500
NEXT dB	74.3	65.3	59.3	56.2	54.8	51.9	47.4	44.3	39.8	38.3	33.8
CHARACTERISTIC IMPEDANCE (ohm)	100 +/- 15								+/- 22		+/- 25
ATTENUATION dB/100m	2.1	3.8	5.9	7.5	8.4	10.5	15.0	19.1	27.6	31.1	45.3
RETURN LOSS dB	20	23	25	25	25	23.6	21.5	20.1	18	17.3	15.2
PSNEXT dB	72.3	63.3	57.3	54.2	52.8	49.9	45.4	42.3	37.8	36.3	31.8
ACRF dB	67.8	55.8	47.8	43.7	41.8	37.9	31.9	27.8	21.8	19.8	13.8
PS ACRF dB	64.8	52.8	44.8	40.7	38.8	34.9	28.9	24.8	18.8	16.8	10.8
PS ANEXT dB	67	67	67	67	67	67	65.6	62.5	58.0	56.5	52.0
PS AACRF dB	67.0	66.2	58.2	54.1	52.2	48.3	42.3	38.2	32.2	30.2	24.2
DELAY ns/100m	570	552	545	543	542	540	539	538	537	536	536
SKEW ns/100m	45										

ORDERING INFORMATION

PART NUMBER	DESCRIPTION	UOM
MSSCABLE6AU	Category 6A Copper Cable, Grey	305m
MSSCABLE6AU-BL	Category 6A Copper Cable, Blue	305m

In support of our policy of continuous product improvement we reserve the right to change materials and specifications without notice. Drawings, where shown, may not be to scale. Dimensions are metric and size may be approximate. Where possible data sheets including MSDS are made available on our website and apps. All products should be installed and used in accordance to manufacturer's instruction provided. Warning: products may be subject of registered designs and patents. Refer to our website or apps for terms and conditions on warranty.