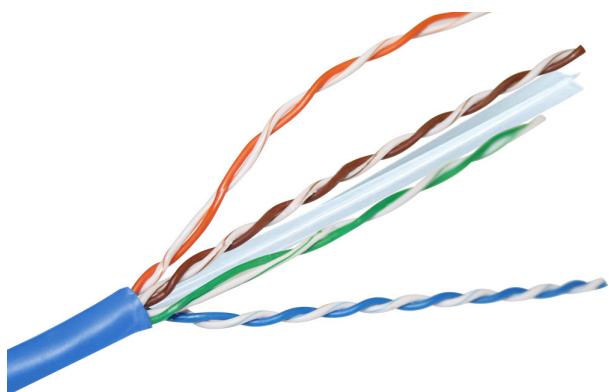


DATASHEET

Category 6 U/UTP Copper Cable



PRODUCT INFORMATION

MSS Data Solutions offers a range of unshielded cables designed to support Cat 6 Link and Channel performance. Perfectly matched to our range of patch panels and RJ45 outlets creating a cabling network with superior performance and reliability

APPLICATIONS

Generic cabling systems. Including 10Base -T, 100Base -T 1000Base -T, ATM, Token Ring Designed to support Category 6 Link and Channel performance.

STANDARD COMPLIANCE

AS/NZS 11801.1:2019

ANSI/TIA 568.2-D

UL Subject 444

ACMA compliance

CONSTRUCTION

	DESCRIPTION
CONDUCTOR	23AWG annealed bare copper
INSULATION	Polyethylene
COLOUR CODE	White / Blue -Blue, White / Orange -Orange, White / Green -Green, White / Brown -Brown
OUTER JACKET	PVC compound (LSZH available upon customer request)
OVERALL DIAMETER	Nominal Diameter 6.0 +/- 0.5 mm
ADDITIONAL COMPONENTS	Supplied without ripcord unless specified, Central separator for improved performance
PRINTING	Jacket printed Black with Legend as per customer requirement

In support of our policy of continuous product improvement we reserve the right to change materials and specifications without notice. Drawings, where shown, may not be to scale. Dimensions are metric and size maybe approximate. Where possible data sheets including MSDS are made available on our website and apps. All products should be installed and used in accordance to manufacturer's instruction provided. Warning: products may be subject of registered designs and patents. Refer to our website or apps for terms and conditions on warranty.

Category 6 U/UTP Copper Cable

MECHANICAL CHARACTERISTICS

	DESCRIPTION
MAXIMUM PULLING FORCE	100N
MINIMUM BENDING RADIUS	Once installed 4 x OD, during installation 8 x OD Nominal
WEIGHT	45 KG/KM
OPERATING TEMPERATURE	-15 Deg C ~ +60 Deg C
INSTALLATION TEMPERATURE	0 Deg C ~ +50 Deg C
FIRE PERFORMANCE PVC	VW1,CMX, CM, CMG, CMR, IEC60332.1. LSZH: IEC60332.1, IEC60332.3

ELECTRICAL PERFORMANCE

TRANSMISSION FREQUENCY (MH _z)	1	4	10	16	20	31.25	62.5	100	200	250	500
NEXT dB	74.3	65.3	59.3	56.2	54.8	51.9	47.4	44.3	39.8	38.3	33.8
CHARACTER IMPEDANCE (ohm)	100+/- 15								+/- 22	+/- 25	
ATTENUATION dB/100m	2.1	3.8	5.9	7.5	8.4	10.5	15.0	19.1	27.6	31.1	45.3
RETURN LOSS dB	20	23	25	25	25	23.6	21.5	20.1	18	17.3	15.2
PSNEXT dB	72.3	63.3	57.3	54.2	52.8	49.9	45.4	42.3	37.8	36.3	31.8
ACRF dB	67.8	55.8	47.8	43.7	41.8	37.9	31.9	27.8	21.8	19.8	13.8
PS ACRF dB	64.8	52.8	44.8	40.7	38.8	34.9	28.9	24.8	18.8	16.8	10.8
PS ANEXT dB	92.5	83.5	77.5	74.4	73.0	70.1	65.6	62.5	58.0	56.6	52.0
PS AACRF dB	78.2	66.2	58.2	54.1	52.2	48.3	42.3	38.2	32.2	30.2	24.2
DELAY ns/100m	570	552	545	543	542	540	539	538	537	536	536
SKEW 100m	45										
NVP	>64%										

ORDERING INFORMATION

PART NUMBER	DESCRIPTION	UOM
MSSCABLE6U	Category 6 U/UTP Copper Cable Blue	305m
MSSCABLE6U-GN	Cable Category 6 U/UTP Green	305m
MSSCABLE6U-YL	Cable Category 6 U/Utp Yellow	305m

In support of our policy of continuous product improvement we reserve the right to change materials and specifications without notice. Drawings, where shown, may not be to scale. Dimensions are metric and size maybe approximate. Where possible data sheets including MSDS are made available on our website and apps. All products should be installed and used in accordance to manufacturer's instruction provided. Warning: products may be subject of registered designs and patents. Refer to our website or apps for terms and conditions on warranty.