

Fast Handling, Enhanced Performance

“Black Mamba” Handheld Kit
for Canon EOS R5 C



Multiple Power Supply
Solutions

Bionic Design
Mamba Style

Detachable
Extended Baseplate

Full Access to
Top Controls



Dedicated HDMI & USB-C
Cable Clamp

Switch for
Any Shooting Situation

Triple Lock, Anti-Twist

Ergonomic Design



Multiple Attachment Points



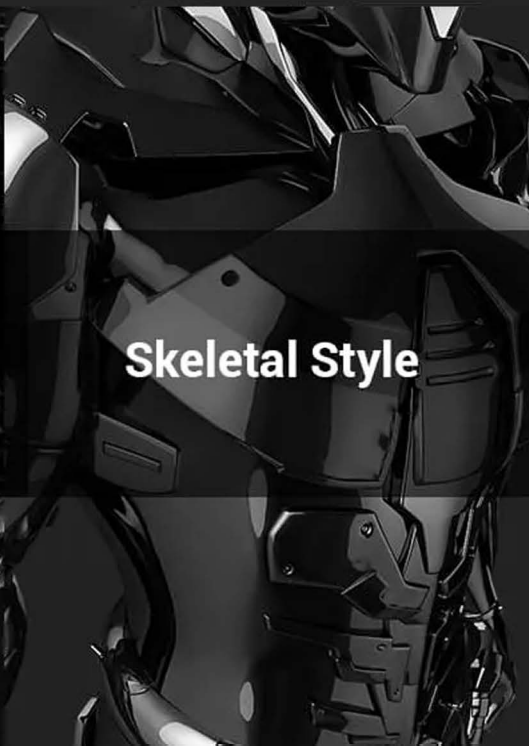
Lightweight

Patented
Designed

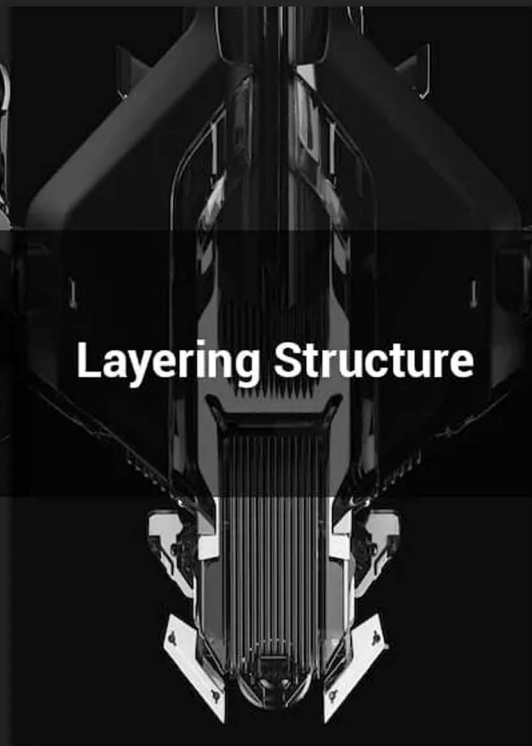
www.theodist.com



Bionic Design



Skeletal Style



Layering Structure

Creating a Classic

The cage design combines the classic red label of the Cinema EOS system and the unique elements of the body to create a perfectly integrated cage for the EOS R5 C



Full Access to Top Controls

The cage follows the camera's contours while making sure all controls and buttons are unobstructed




Ergonomically Designed Grip

The smooth shape and compact design make handling fast and comfortable

Full Flexibility

The cage has multiple built-in accessory mounts such as 1/4"-20 threaded holes, ARRI 3/8"-16 locating holes, cold shoes, NATO rails, and 3/8"-16 threaded holes, that are compatible with SmallRig's complete product ecosystem

-  1/4"-20 Threaded Hole
-  ARRI 3/8"-16 Locating Hole
-  Cold Shoe Mount
-  NATO Rail
-  3/8"-16 Threaded Hole



The hole under the cage allows to attach a follow focus system easier after installing the rod clamp

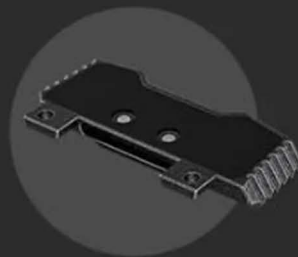


Flexible Shooting Solutions as Needed

The detachable extended baseplate not only improves balance and stability, it also serves as a riser plate for increased clearance when attaching the bottom rail



Horizontal Mounting



Vertical Mounting

Quickly Switch Platforms With Ease

The built-in Arca-Swiss quick release plate lets you instantly switch from handheld to tripod to stabilizer shooting



Triple lock, Anti-Twist

The cage is securely locked by the 1/4"-20 screw, positioning pin, and M4 screw

* Comes with a magnetic double-headed wrench for easy setup of the cage



Built-in silicone pads for all-around protection





The cage has strap slots for attaching hand and shoulder straps

"Black Mamba" Top Handle

(ID: 3786)

Multiple built-in accessory mounts, lightweight and easy to use



1/4"-20
Threaded Hole



ARRI 3/8"-16
Locating Hole



Cold Shoe
Mount



HDMI & USB-C Cable Clamp

The hand-tightened cable clamp ensures the cables stay securely attached for safe transfer of data

“Black Mamba” Hand Strap

(ID: 3848)

Helps stabilize shooting, designed with breathable and sweat-absorbing material to maximize the comfortability and usability

* Sold separately



Multiple Power Supply Solutions

Handheld Solution

Power Bank

ARRI-style Monitor Mount (ID: 2903)

Power Bank Holder (ID: 2336)

NATO Rotating Handle (ID: 3260)

* A power bank with 9V / 3A output is required



Tripod Solution

Power Supply Base + Dummy DC Battery Supply

NP-F Battery Adapter Plate (ID: 3168)

LP-E6 Dummy Battery Charging Cable (ID: 2919)

mini Follow Focus F40 (ID: 3010)

mini Matte Box (ID: 3196)

Rail Support Baseplate (ID: 2092)

NATO Rotating Handle (ID: 3260)

Shoulder Solution

V-mount Battery + Dummy DC Battery Supply

- Basic Shoulder Pad ID (ID: 2894)
- Articulating Arm with Dual Ball Heads (ID: 2070)
- Shoulder Rig Handle Kit (ID: 2002)
- V-mount Battery Adapter Plate (ID: 3498)
- LP-E6 Dummy Battery Charging Cable (ID: 2919)



www.theodist.com

Stabilizer Solution

- Sling Handgrip for DJI RS 2 / RSC 2 (ID: 3028)
- Swivel and Tilt Adjustable Monitor Mount with Cold Shoe Mount (ID: 2905)
- 12mm / 15mm Single Rod Clamp (ID: 3276)



"Black Mamba" Camera Cage for Canon EOS R5 C



ID: 3890

In the Box

Cage × 1
Detachable Extended Baseplate × 1
Allen Wrench × 1
1/4"-20 Screw × 2

Compatibility

Canon EOS R5 C
Canon EOS R5
Canon EOS R6

Product Dimensions

153.0 × 104.0 × 113.5mm
(6.0 × 4.1 × 4.5in.)

Package Dimensions

165.0 × 155.0 × 85.0mm
(6.5 × 6.1 × 3.3in.)

Product Weight

223g (7.8oz.)

Package Weight

388g (13.7oz.)

Material(s)

Aluminum Alloy, Stainless Steel, Silicone, ABS + PC

"Black Mamba" Handheld Kit for Canon EOS R5 C

In the Box

Cage × 1
Detachable Extended Baseplate × 1
HDMI & USB-C Cable Clamp × 1
"Black Mamba" Top Handle × 1
Allen Wrench × 1
1/4"-20 Screw × 2

Compatibility

Canon EOS R5 C
Canon EOS R5
Canon EOS R6

Product Dimensions

175.0 × 130.0 × 181.5mm
(6.9 × 5.1 × 7.1in.)

Package Dimensions

165.0 × 155.0 × 85.0mm
(6.5 × 6.1 × 3.3in.)

Product Weight

368g (13oz.)

Package Weight

533g (18.8oz.)

Material(s)

Aluminum Alloy, Stainless Steel, Silicone, ABS + PC



ID: 3891

Related Products



"Black Mamba" Hand Strap
ID: 3848



Drop-in HawkLock mini Magic Arm
with Quick Release Ball Head
ID: 3515



Holder for Portable Power Banks
ID: 2336



Drop-in HawkLock mini Quick Release
Monitor Mount with Cold Shoe
ID: 3514



"Black Mamba" Top Handle
ID: 3786



Rotating NATO Handle (Left Side)
ID: 3260



Sunhood for Canon EOS
R3/ EOS R5 & R5 C Camera
ID: 3673



Screen Protector for Canon EOS
R3 / R5 / R5 C (2 + 2pack)
ID: 3674



DC5521 to LP-E6 Dummy
Battery Charging Cable
ID: 2919