

TORQ

TORQ
TQI140P



USER'S MANUAL

TORQ

Intel Core I3

TQI140P

- Important safety instructions -

This unit should be used in an environment with an ambient temperature between 5°C (41°F) and 35°C (95°F).

Do not expose the unit to rain or moisture and keep it away from liquids. In case of splashing water or other liquid on the unit, immediately switch off the unit and wait until it is completely dry before turning it on again.

Do not expose the device directly to solar radiation.

Do not use strong solvents, liquid detergents or other chemicals on or near the surface of the unit to prevent corrosion or deterioration of the surface of the unit.

Do not expose the camera to a dusty environment.

Do not use the unit during a gas leak.

Do not expose the device to strong magnetic or electric fields. You can run the device through airport x-ray detectors. However, it is recommended not to pass your device through the magnetic detection portals or expose it to portable detectors.

Do not place any objects on the device.

Do not place the unit on an uneven or unstable surface.

Make sure to protect the unit from falls or any other impact that may damage it.

Do not leave the appliance on or loaded on your lap or any other part of your body to avoid any risk of heat-related injuries.

Switch off the unit before transporting it or covering it with a material that does not allow optimal air circulation.

Do not use damaged power cords, accessories or other devices with your device.

We recommend the exclusive use of the accessories (power supply, cables, etc.) supplied with the unit.

Use only original batteries. Replacing the battery with an incorrect battery can cause an explosion risk.

Do not disassemble, modify or repair the unit yourself, as this may void the warranty.

Please back up your important content regularly to avoid data loss.

Our company accepts no responsibility for the loss or removal of items contained in the device due to improper use of the hardware or software, lack of maintenance or any other accidental event.



This product has been designed to allow proper recycling of parts and components. The symbol representing a crossed-out wheeled bin indicates that the device should not be disposed of with municipal waste. Consult local regulations for disposal of electronic devices.



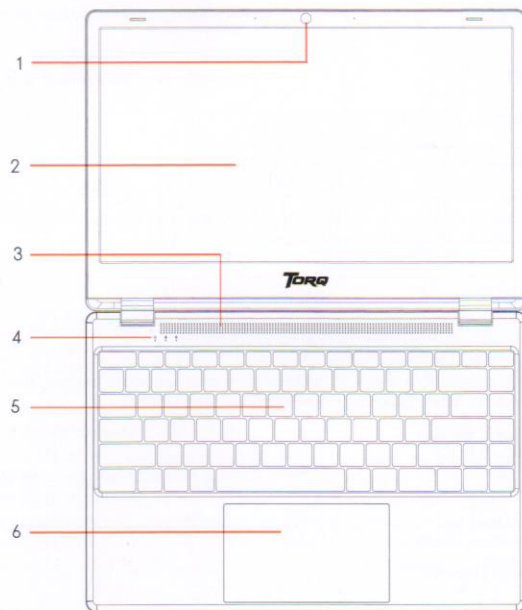
The symbol representing a crossed-out wheeled bin indicates that the battery should not be disposed of with municipal waste. Consult local regulations for battery disposal.



At full volume, prolonged listening to the portable audio device may damage the user's hearing.

- Presentation of the device -

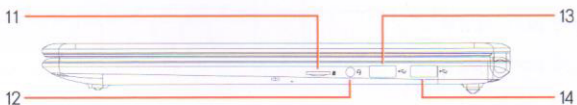
Front view



Left view



Right view



Note : The presentation of the device and some features may vary by country, model or version.

Front view

1. Front camera - Webcam
Use this camera for video calls or to take pictures.
2. Screen
3. Speakers
4. Power supply indicator
5. Keyboard
6. Touchpad
The touchpad allows you to enjoy the features of a mouse. It offers an intuitive interface thanks to its multi-gestures features.

Left view

7. USB port type A
This port is compatible with USB devices such as a keyboard, mouse, flash drive (USB sticks, memory card readers...), external hard disk, printer.
8. Charging indicator
This indicator lights up while the Laptop is being charged.
9. DP port
This port allows you to connect your device to an DP-compatible device such as a TV, monitor or projector.
10. TYPE-C(full function)

Right view

11. Memory Card Slot,support up to 512GB
12. Headset/microphone socket
Use this port to connect external speakers or headphones to your tablet. You can also connect headphones with an external microphone.
13. USB port type A
14. USB port type A

- Switching on -

Note : Charge your Torq device before using it for the first time.

Charging the battery of your device

Connect the AC adapter to an earthed electrical outlet.

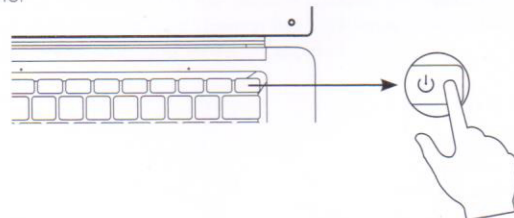


WARNING :

- The battery in your device may present a fire or burn hazard if it is removed or disassembled.
- Comply with the information on the device's warning labels to avoid any risk of injury.
- There is a risk of explosion if the battery is replaced by an incorrect model.
- Do not dispose of the battery in a fire.
- Do not attempt to short-circuit the battery of the camera.
- Do not attempt to disassemble the battery or reassemble the battery.
- Stop using the battery if it leaks.
- The battery and its components must be recycled or disposed of properly.
- Keep the battery and its components out of reach of children.

Turning your device on / off

Turn on your device by pressing and holding the power button for a long time.



To turn off your device, go to the Start menu and select Start/Stop > Stop.

First start of your device

During the first boot, the Windows® 11 operating system will guide you through the configuration steps.

Once these configuration steps are completed, the system completes the installation and applies your customized settings. Do not turn off the unit and ensure that there is sufficient battery power during this step.

The Windows® 11 home screen appears after installation and configuration is complete.

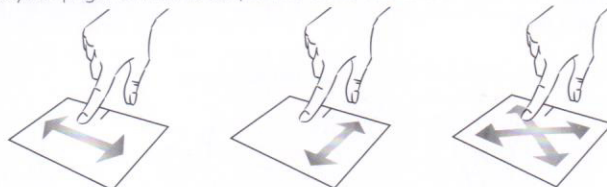
Note : If you want to restore the factory configuration or reinstall your operating system, we recommend using the Windows Reset function. For this reason,

1. Open the start menu and choose «Settings».
2. Select «Update and Security» then «Recovery» from the Right menu.
3. Click on the «Start» button in the «Reset this PC» section.
4. Let us guide you.

- Using the touchpad -

Move the pointer

Slide your finger on the touchpad to move the cursor.



Click / Double-click

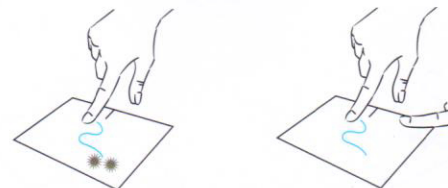
Press briefly once to make a click. For example, to select an item on the desktop or in the file explorer or to open an application from the start menu.

Press briefly twice to make a double click. For example, on the desktop or in the file explorer, this function will allow you to open the selected item.



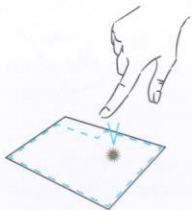
Drag and drop

Press the trackpad briefly twice to select the item and hold your finger on the trackpad by sliding it to the desired position and releasing. You can also select an element and hold down a left click while sliding another finger on the touchpad to drag and move an element.



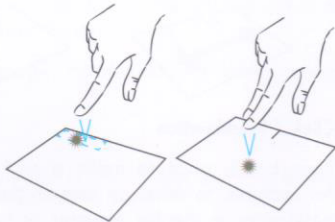
Left click

Briefly press the touchpad once to make a left click.



Right click

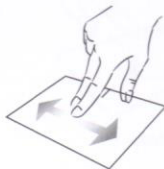
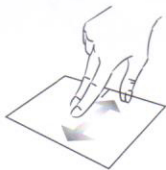
Press briefly once at the bottom right of the touchpad to make a right click or press briefly with two fingers on the touchpad.



Scrolling

Slide two fingers up or down to scroll vertically.

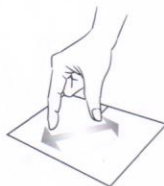
Slide two fingers left or right to scroll horizontally.



Zoom

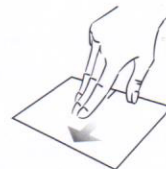
Move two fingers closer to the touchpad area to zoom out (zoom -).

Move two fingers away from the touchpad area to zoom in (zoom +).



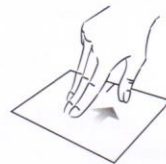
Show all applications running

Slide three fingers upwards to display all applications running.



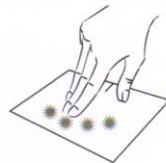
View the desktop

Slide three fingers down to display the Windows® 11 desktop.



Open the action center

Briefly press with four fingers to open the Windows® 11 action center.




- Using the keyboard -

Function keys

The keypad on your device is equipped with function keys for performing actions or settings.

Note : The key icons displayed and the functions offered may vary depending on the model.

fn +  Lower the volume level


fn +  Increases the volume level

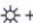
fn +  Enables or disables sound

fn +  Media player playback or pause function

fn +  Previous music or video

fn +  Next music or video

fn +  Decreases the brightness of the screen

fn +  Increases the brightness of the screen

Pause Cancels the current program (example: a game)

PrtScr/ Saves a screenshot of your Impér screen

NumLck/ Enables/disables the numeric VerrNum keypad

ScrLk Enables/disables scrolling

Ins Enables/disables the Refresh mode

Shortcut keys

Using the shortcut keys makes it easier to navigate under Windows® 11.

 Opens the Windows® 11 Start menu

 + **A** Opens the action center

 + **D** Displays the desktop

 + **E** Opens the file explorer

 + **I** Opens the Device Settings menu

 + **L** Locks the computer and displays the lock screen

 + **M** Reduces the size of active windows

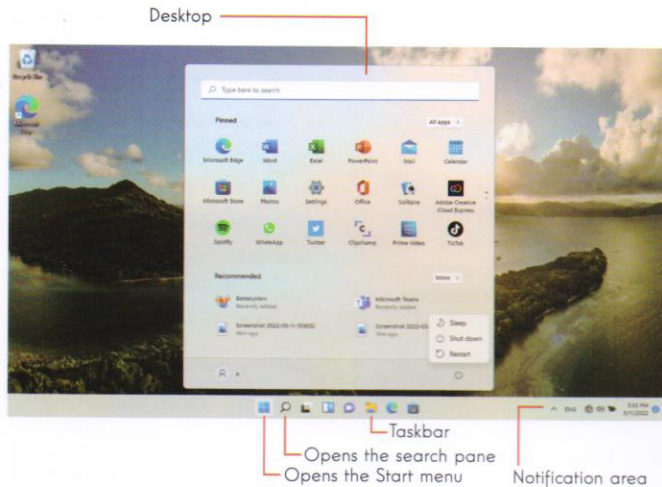
 + **S** Opens the search window

 + **P** Opens the Project pane

- Windows® 11 Overview -

Presentation of the interface

Note : The interface may vary by country, model or version of Windows® 11



The Start menu is the entry point for your device. It allows you to access applications, folders and settings.

The taskbar displays the applications in use and allows you to switch between them.

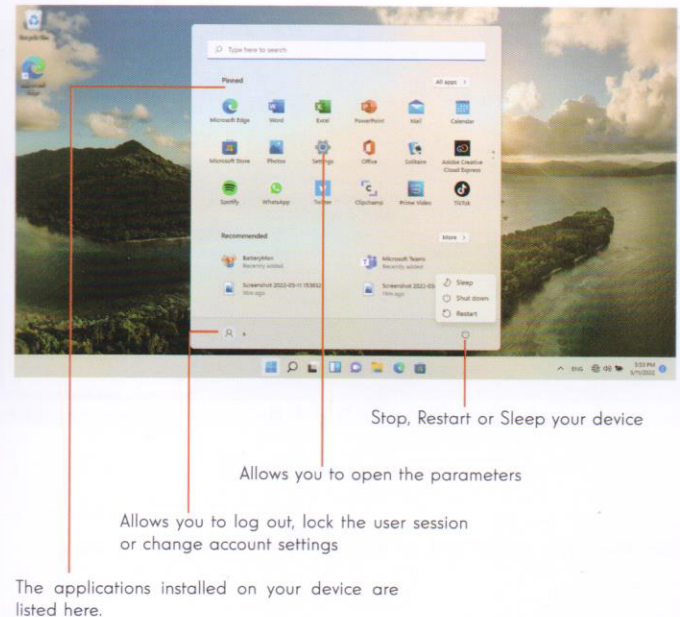
The notification area displays important information about the use of your device.

The search pane allows you to easily search through your files, applications and other items on your device.

Presentation of the Start Menu

Note : The interface may vary by country, model or version of Windows® 11

The Start menu is the entry point for your device. It allows you to access applications, folders and settings.



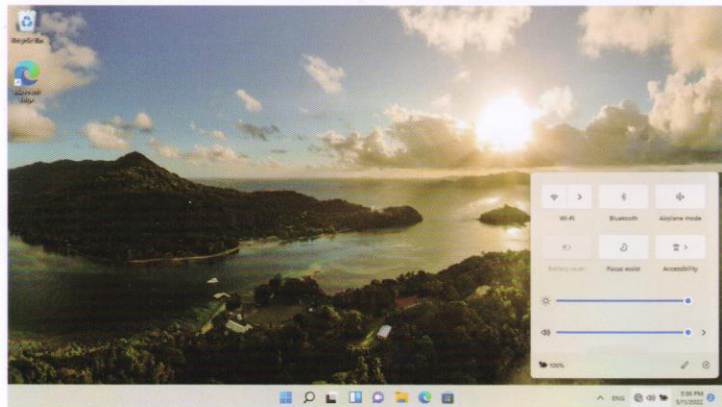
The applications installed on your device are listed here.

Note : To open an application, move the mouse pointer over it and click to open it.

Presentation of the Action Centre

Note : The interface may vary by country, model or version of Windows® 11




The action center groups all notifications from your applications. The lower part provides the main shortcuts useful for setting up your device.



To open the action center, click on the icon  in the notification area.



Connecting to a wireless Wi-Fi network

Your device is equipped with a Wi-Fi module. Connecting to a Wi-Fi wireless network will allow you to access the Internet, check your e-mails, perform device updates or access a home or business network. To connect, follow these steps:

- > Click on the  or  in the notification area.
- > If Wi-Fi is not enabled, click on the .
- > Select your wireless network from the list.
- > Click on «Connect». If your wireless network requires a security key, fill in the key before making the connection.

Pairing your device with a Bluetooth device


Your device is equipped with a Bluetooth module. This one allows you to connect it to a Bluetooth device (mouse, portable speakers...). To connect the two devices, follow these steps:

- > Go to the Start menu  and select Settings.
- > Click on the «Devices» section and select «Bluetooth and other devices».
- > Select the option  "Add Bluetooth or other device"
- > Let the assistant guide you.

Activate the Airplane mode

Airplane mode disables wireless Wi-Fi and Bluetooth connectivity. To activate the airplane mode :

> Click on the icon  or  in the notification area.

> Click on the button .

To disable the airplane mode :

> Click on the icon  or  in the notification area.

> Click on the button .

System restoration


WARNING:

Make a backup of your important data before running this option.

Windows® 11 offers several recovery options to restore the factory configuration :

- Keep my files: Reset your device by keeping your personal files.
- Delete All: Restores the factory configuration of your device. Make a backup of your important data before running this option.
- Retrograde to the previous version of Windows® 11: Use this option if you are having trouble with your device after the system update.
- Advanced boot: This option allows you to boot from an external device or access the device's firmware settings or change Windows boot settings or restore Windows from a disk image.

To perform a restoration operation, follow the following steps :

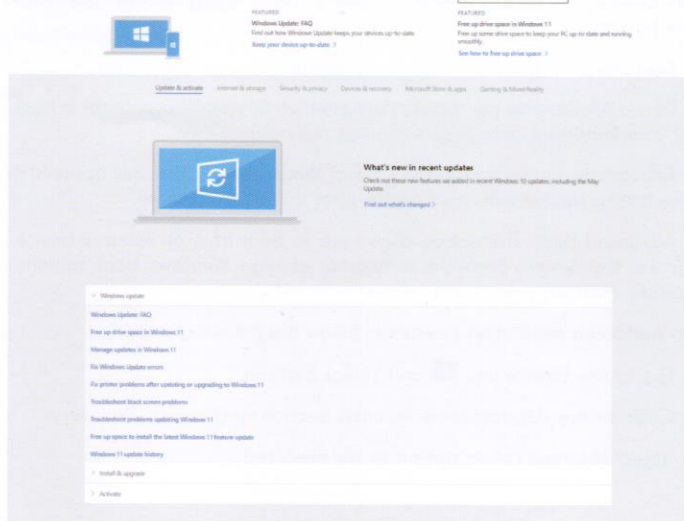
- > Go to the Start menu  and select Settings.
- > Click on the «Update and security» section and select «Recovery».
- > Select the restoration option to be executed.

Windows 11

Discover more features on the Microsoft website :

<https://support.microsoft.com/en-us/hub/4338813/windows-help?os=windows-11>

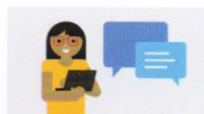
Windows help



Get more support



Microsoft Community
Browse questions, follow discussions, and share your knowledge in the Microsoft Community forums.
[Join the community >](#)



Assisted support options
Learn about support plans to keep your Windows and Office software running smoothly.
[Purchase a support plan >](#)



Contact support
Have an issue with your Microsoft product? We'll get you the help you need.
[Get support >](#)

- FAQ -

A black or colored dot appears on the screen !

This does not affect the performance of your device. If the problem persists, please consult the general warranty conditions and then contact Torq Customer Service.

The touchpad doesn't work !

Check that the touchpad is correctly activated using the function keys Fn +

The battery charge indicator does not light up !

Make sure that the AC charger is properly connected to an AC outlet and the power port of the unit. If the problem persists, contact Torq Customer Service.

How to optimize battery life ?

To optimize the battery life, you can adjust the screen brightness, disable Wi-Fi and Bluetooth if you are not using it and close applications you are not using.

I lost the AC adapter !

Contact Torq Customer Service.

The battery doesn't work anymore !

Contact Torq Customer Service.

The device does not emit any sound !

Check that the sound has not been disabled by using the function key Fn + or by increasing the volume by using the function key Fn + . Make sure that no headphones are connected to your device.

When the device starts, the power indicator lights up but the operating system does not start !

Force the device to turn off by pressing the power button for 10 seconds and then disconnect all connected USB devices. Connect the device to a socket with the charger. Turn on the device.

If the problem persists, contact Torq Customer Service.

The computer does not wake up from sleep mode !

Use the power button to exit the standby mode. Check that the battery level is sufficient by plugging the unit into an AC outlet using the charger. Press the power button again.

Where to find the drivers for your Torq device ?

The drivers necessary for the proper functioning of your device are present in the following folder :

C:\WINDOWS\DRIVERS

We recommend that you backup the entire folder to an external storage medium (external hard disk, USB sticks, CD-R) in order to keep a copy of these drivers.

WARRANTY CARD

Model Name _____

Product Serial No _____ IMEI No./MEID No. _____

Date of purchase

--	--

dd

--	--

mm

--	--

yy

Customer's Details

Name _____

Address in full _____

Telephone No _____

Dealer Name & Address _____

Customer's signature & Date

Dealer's signature with rubber stamp